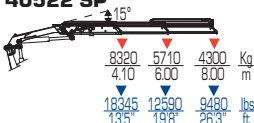
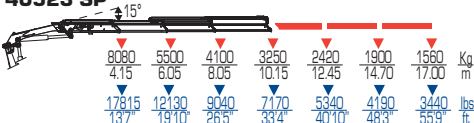




40522 SP



40523 SP



40524 SP



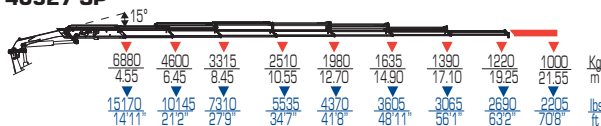
40525 SP



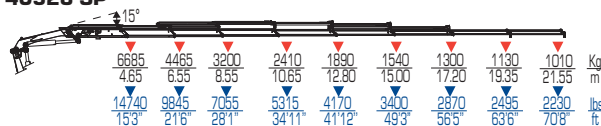
40526 SP



40527 SP

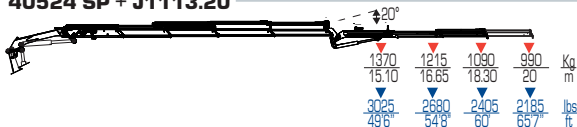


40528 SP

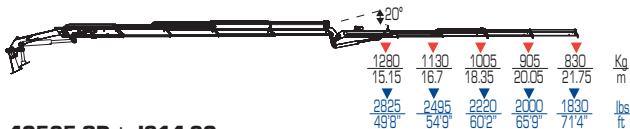


	tm	ft lbs	l/min	gals/min	Mpa	Psi	o
40522 SP	34.4	248820	80	21	33	4790	
40523 SP	25.2	242540	80	21	33	4790	
40524 SP	24.6	235620	80	21	33	4790	
40525 SP	32.1	232360	80	21	33	4790	
40526 SP	31.7	229170	80	21	33	4790	
40527 SP	31.3	226420	80	21	33	4790	
40528 SP	31.1	224840	80	21	33	4790	
40524 SP + J1113.20	-	-	80	21	33	4790	continuo
40524 SP + J1114.20	-	-	80	21	33	4790	continuos
40525 SP + J814.20	-	-	80	21	33	4790	continuo
40525 SP + J815.20	-	-	80	21	33	4790	endlos
40526 SP + J614.20	-	-	80	21	33	4790	continuo

40524 SP + J1113.20



40524 SP + J1114.20



40525 SP + J814.20



40525 SP + J815.20



40526 SP + J614.20



kgj	lbe	kgj	lbe	mm	ft	mm	ft	mm	ft
ST	ST	LC	LC						
3240	7145	3350	7390	2525	8'3"	2370	7'9"	1130	3'8"
3440	7585	3550	7830	2525	8'3"	2370	7'9"	1130	3'8"
3630	8005	3740	8250	2525	8'3"	2370	7'9"	1130	3'8"
3810	8400	3920	8645	2540	8'4"	2370	7'9"	1180	3'10"
3960	8735	4070	8975	2540	8'4"	2370	7'9"	1205	3'11"
4100	9040	4210	9285	2540	8'4"	2370	7'9"	1225	4'
4210	9285	4320	9525	2540	8'4"	2410	7'11"	1245	4'1"
4450	9815	-	-	2530	8'4"	2670	8'9"	1300	4'3"
4530	9990	-	-	2530	8'4"	2670	8'9"	1300	4'3"
4620	10190	-	-	2530	8'4"	2670	8'9"	1300	4'3"
4675	10310	-	-	2530	8'4"	2670	8'9"	1300	4'3"
4755	10485	-	-	2530	8'4"	2670	8'9"	1300	4'3"